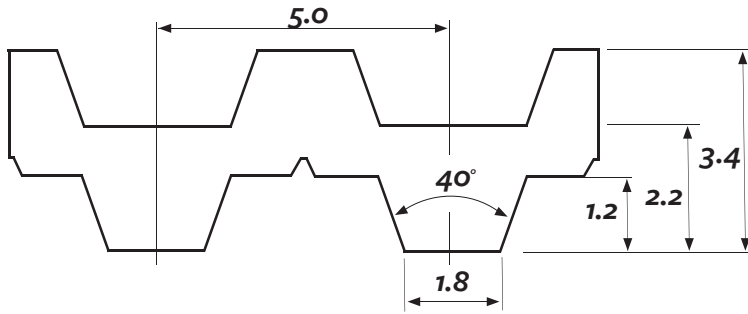


T5 DL Steel Cords



FLEX = Truly endless
 M = Open length
 V = Endless with a splice

Product details

Hardness :	92 °Shore A
Tensile members :	Steel Ø0.3mm
Width tolerance :	± 0.5mm
Thickness tolerance :	± 0.2mm
Length tolerance :	± 0.8mm/meter
Weight per meter :	± 30g /per 10mm belt width

Minimum Pulley diameter

Min. nr. of teeth	Min. nr. of teeth	Idler min Ø	Min. nr. of teeth	Idler min Ø
15	20	30mm	15	30mm

Allowable Tensile Load (N)

Belt width	M	V	FLEX
10	310	150	310
12			360
16	460	230	490
20			620
25	830	410	800
32	930	460	1.010
50	1.660	830	1.610
75	2.490		2.410
100	3.320		3.220

Breaking Load (N)

Belt width	M	V	FLEX
10	1.260	630	1.260
12			1.470
16	1.900	950	1.990
20			2.500
25	3.360	1.680	3.250
32	3.780	1.890	4.100
50	6.720	3.360	6.500
75	10.000		9.760
100	13.400		13.000

The specifications listed are based on NK-Technics experience. However, our specifications and data do not cover all possible belts drive conditions. It is the responsibility of the belt drive system engineer to ensure NK-Technics belts are appropriate for a given system and application. The provided data represent our in-house experience and does not necessarily match product performance in industrial use. NK-Technics cannot assume any liability concerning the suitability and process ability of our products. We also cannot assume liability for process results, damage or consequential damages associated with the use of our products.

Do not use NK-Technics.com belts in applications that depend solely upon the belt to raise/lower, support or sustain a mass without an independent safety backup system.

ALL INFORMATION CONTAINED ARE SUBJECT TO CHANGE WITHOUT NOTICE.